



## Analytical Methods

## Exploratory analysis of the volatile profile of beers by HS–SPME–GC

Gilmare Antônia da Silva, Fabio Augusto, Ronei Jesus Poppi\*

Institute of Chemistry, P.O. Box 6154, University of Campinas – UNICAMP, 13083-970 Campinas, SP, Brazil

## ARTICLE INFO

## Article history:

Received 4 December 2007

Received in revised form 23 April 2008

Accepted 5 May 2008

## Keywords:

Beer

Gas chromatography

Solid phase microextraction

Exploratory analysis

Kohonen neural network

## ABSTRACT

Kohonen Neural Network maps were used for exploratory analysis of Brazilian Pilsner beers. The input data consisted of the peak areas of the volatile profile compounds of samples obtained after headspace solid phase microextraction coupled to gas chromatography. The chromatographic peaks were identified as originating from compounds such as alcohols, esters, organic acids, phenolic compounds, ketone and others typically found in the headspace of such samples. Analysis of the Kohonen maps showed that the 20 different brands of beer could be grouped into six sets, with three of these sets having only one sample, according to the composition of their volatile fractions. The volatile species associated with the similarities and differences between each sample group were tentatively identified by mass spectrometry and their contributions to the grouping are discussed.

© 2008 Elsevier Ltd. All rights reserved.

## 1. Introduction

Beer, a very complex mixture of constituents varying widely in nature and concentration levels is brewed from raw materials including water, yeast, malt, and hops and contains a broad range of different chemical components that may react and interact at all stages of the brewing process. Beer consumption has been increasing steadily in recent decades, even in countries where alcoholic beverages are not traditional: in 2005, the total world production was up to  $\sim 1.6 \times 10^{11}$  L (almost 25 L per capita, a 3% increase from 2004) (Barth-Haas Group, 2006); the top five producing countries – China, USA, Germany, Brazil and Russia – are responsible for more than 50% of the total output. Therefore, there is a large demand for fast and reliable methods to evaluate organoleptic characteristics such as the aroma and flavor. The volatile compounds that have been identified in beers and associated to their flavor belong to varied chemical groups, including several aliphatic and aromatic alcohols, esters, acids, carbonyl compounds, terpenic substances and others. A better understanding of the key aroma compounds is of paramount importance for modern brewing technology, helping the selection of raw materials and yeast strains, as well as for routine quality control.

Considering the nature and concentration of the involved chemical species, gas chromatography (GC) is the conventional technique for the detection and identification of aroma components. However, a proper isolation and pre-concentration technique should be applied before the chromatographic analysis itself:

among the possible alternatives, headspace solid phase microextraction (HS–SPME) is presently considered the best choice. SPME has been successfully applied to several different analytical problems such as the aroma-related analysis of samples such as cupuassu chocolate (Oliveira, Pereira, Marsaioli, & Augusto, 2004). There are some reports on HS–SPME studies using relevant beer volatiles for aroma and flavor evaluation, ranging from comprehensive characterization of the volatile fraction (Pinho, Ferreira, & Santos, 2006; Wampler, Washall, & Matheson, 1996) to the detection of specific groups of analytes, such as sulphur compounds (Hill & Smith, 2000). In most cases, HS–SPME is employed for identification of individual analytes or groups of analytes. Since HS–SPME is faster and simpler than similar techniques, it allows more samples to be processed, generating larger amounts of data that also demands new interpretation procedures. Information regarding the samples, not revealed through conventional methodologies, can be produced. So, multivariate data processing approaches are increasingly popular. For example, after principal components analysis (PCA) of HS–SPME chromatograms, Bicchi, Panero, Pellegrino, and Vanni (1997) were able to distinguish between pure and blended Arabica and Robusta coffees.

Although well established in the literature, conventional PCA has some limitations (Otto, 1999). In the cases when the sample set is described by a significant (large) number of principal components, these can complicate the interpretation of the results and the grouping of similar samples. More important, PCA does not work with non-linear data structures, as is the case of most real sample sets; therefore, more sophisticated chemometric algorithms should be employed. One of most interesting of these other approaches uses self-organizing maps (SOM) generated through

\* Corresponding author. Tel.: +55 019 35213126; fax: +55 019 35213023.  
E-mail address: [ronei@iqm.unicamp.br](mailto:ronei@iqm.unicamp.br) (R.J. Poppi).

the Kohonen artificial neural network (KANN) (Kohonen, 2001). ANN algorithms do not demand formal knowledge of a mathematical function relating the response and the input data, allowing complex non-linear relationships to be modeled; the ANN-based approach has already been shown to be useful for simultaneous multi-optimization of operational variables of the SPME procedure (Kowalski, da Silva, Poppi, Godoy, & Augusto, 2007). A Kohonen map allow complex, high dimensional data sets to be represented by bi- or tri-dimensional structures that stress the properties of the data set most relevant to the clustering of the samples. Users can intuitively group similar individuals by simple visual inspection of the map (Kohonen, 2001).

Kohonen maps are composed of a single layer of neurons arranged regularly in a two-dimensional grid; a general scheme of a Kohonen network can be visualized in Fig. 1. Each sample in the input data set is associated to an input vector  $x$ ; the elements on the input vectors  $x$  correspond to the value for each experimental variable measured for the sample (e.g., the peak areas measured for each detected analyte). The neurons in the Kohonen map are vectors with dimensions equal to the number of experimental variables on the input vectors  $x$ .

Each neuron is a vector with dimension equal to that of each sample in the input data vector  $x$ . Each input vector  $x$  will correspond to a specific sample, which normally contains the values for the experimental variables (in the present work, peak areas corresponding to each compound in the beer samples). All the neurons have the same number of weights, according to the dimensionality of the input vector  $x$ . The dimensionality of these vectors will depend on the number of variables contained in the data: the weights can be defined as a vector where each component will be related to a specific variable of the input vector. According to the weight values, specific variables from the input vector  $x$  will be considered to be more representative for the description of this sample. The values for the weight are estimated through the neural network.

The neurons are represented by a  $d$ -dimensional weight vector  $w = [w_1, w_2, \dots, w_d]$ , where  $d$  is equal to the dimension of the input vectors. The weights of each neuron are obtained by looking at the weights in all levels exactly aligned in the same vertical column. When the input is presented to a Kohonen network, the distance between each data vector and all the SOM weight vectors is calculated according to Eq. (1).

$$\text{output} \leftarrow \min \left[ \sum_{i=1}^m (x_{si} - w_{ji})^2 \right] \quad j = 1, 2, \dots, n \quad (1)$$

The index  $j$  refers to a particular neuron;  $n$  is the number of neurons;  $m$  is the number of weights per neuron; and  $s$  identifies a particular input. The neuron whose weight vector  $w$  is closest to the input vector  $x$  is called the best-matching unit (BMU) or winning neuron, where the difference between its weight vector  $w$  and the input vector  $x$  produces a minimum in the network output. After reaching the BMU the correction of weights starts (adaptation of the ANN or learning process). The correction of weights does not affect all neurons in the network, but only those topologically close to the BMU, in an iterative process similar to those occurring in biological neural networks. The Kohonen neural network can be visualized as neurons spread on a bidimensional plane, which results on easier visualization and interpretation of the results. Samples assigned to the same neuron can be considered as equivalent towards the property described by the input data set; also, individuals in neighboring neurons can be designed as forming groups of samples with similar properties. The larger the distance between the neurons, the more different, in respect to the measured property used as data input, are the samples associated with these neurons. HS-SPME-GC-MS has already been combined with the Kohonen network for sample classification purposes in a work that identified strawberry varieties according to the profile of extracted volatiles (De Boishebert, Urruty, Giraudel, & Montury, 2004).

In the present work, HS-SPME-GC-FID and MS were employed to assess the profiles of volatile organic compounds from Pilsner-type beer samples made in Brazil. The data sets (relative peak areas for the principal detected compounds for each sample) were evaluated utilizing Kohonen artificial neural networks, to verify possible similarities and groupings of the samples, as well as to identify volatile compounds that could be associated to each group of similar samples.

## 2. Materials and methods

### 2.1. Samples and materials

Pilsner beer of 20 different brands (three cans per brand) were obtained at the local market and stored in proper conditions before use. The content of each can was analyzed immediately after

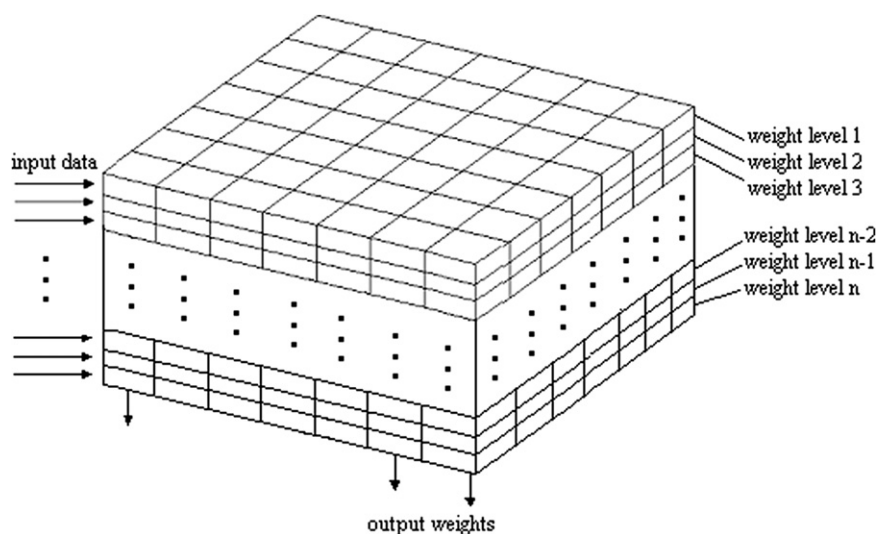


Fig. 1. Typical Kohonen network architecture. The neurons are represented as columns packed in a box. The inputs are coming from the side to all neurons at the same time. The term  $n$  represents the total number of weight levels.

opening. All extractions were performed manually using 65  $\mu\text{m}$  PDMS/DVB SPME fibers (Supelco, Bellefont – PA, USA) coupled to a holder and previously conditioned according to the supplier's instructions; selection of this fiber was based on preliminary studies. During the extractions, samples were contained in 16 mL glass vials capped with Teflon/silicone septa (Pierce, Rockford – IL, USA). Reagent grade NaCl (J.T. Baker, São Paulo, Brazil) and a C8–C20 *n*-alkane standard solution (Fluka, Büchs, Switzerland) were also employed.

## 2.2. Gas chromatography

Separation, detection and quantitation of volatile organics after HS–SPME was performed with a 6890 N GC–FID (Agilent Technologies, Wilmington – DE, USA) fitted with a 30 m  $\times$  0.25 mm  $\times$  0.25  $\mu\text{m}$  HP-50 column (Agilent), a split–splitless injector operated in the splitless mode and a SPME glass liner. The oven temperature was programmed as follows: 40 °C hold for 2 min, then 10 °C  $\text{min}^{-1}$  to 140 °C, then 7 °C  $\text{min}^{-1}$  to 250 °C, hold for 3 min. The injector and detector temperatures were 210 °C and 280 °C, respectively. Helium was used as carrier gas at a flow rate of 1.0 mL  $\text{min}^{-1}$ . Identification of the extracted analytes was performed in a Saturn 2000 Ion Trap GC–MS (Varian, Walnut Creek – CA, USA) fitted with the same column and operated under the same conditions as the GC–FID. GC–MS data treatment was carried out using the Automated Mass Spectral Deconvolution and Identification System (AMDIS) v. 2.61 software and the NIST Mass Spectral Search Program v. 1.6 d (NIST, Washington, DC, USA).

## 2.3. HS–SPME procedure

After opening the cans, beer samples were immediately degassed in an ultrasonic bath for 15 min at  $\sim$ 5 °C; NaCl (27 g/100 mL beer) was added after CO<sub>2</sub> gas removal. Aliquots of 5 mL of degassed beer were enclosed in the sample vials and magnetically stirred (1200 rpm) for 5 min for sample/headspace equilibration. After this period, the PDMS/DVB fiber was exposed to the headspace for 30 min. The sample temperature was kept at 50 °C during the equilibration and extraction steps, using a heated circulating bath (Cole-Parmer, Vernon Hills – IL, USA). The extracted analytes were immediately desorbed in the injection port of the GC–FID at 210 °C; the fiber was kept in the GC injector for 15 min to ensure total desorption and avoid inter-run carryover. Each sample was extracted in triplicate. For identification of the chromatographic peaks, the same procedure was repeated for selected samples, but with separation and detection with GC–FID and GC–MS; samples were spiked with *n*-alkane mix to estimate the linear temperature-programmed retention indexes (LTPRI) of the detected peaks.

## 2.4. Data processing

All calculations were performed in the MATLAB 6.5 programming environment (The MathWorks, Natick, MA) fitted with a public domain SOM toolbox (Vesanto, Himberg, Alhoniemi, & Parhankangas, 2000). The input data set was organized into a matrix of 20 lines (corresponding to 20 samples) and 32 columns (32 variables, corresponding to the average peak areas of selected chromatographic peaks). The whole data set was auto-scaled along all the variables in order to have the variances of the variables normalized and their means made equal to zero. Scaling of variables is of special importance for Kohonen neural network application, since its algorithm computes the Euclidian distances between vectors. If a particular variable is much higher than its counterparts, it will dominate the map organization due to its greater impact on the measured distances. The pre-processing procedure warrants

that all variables have the same importance in the map, allowing users to evaluate their significance in sample qualification.

The maps were linearly created and initialized. For the initialization, eigenvalues and eigenvectors of the data were calculated. The map weight vectors are initialized along the largest eigenvectors of the covariance matrix. The Kohonen neural network was trained with the input data set using the batch training algorithm; in this algorithm, the whole set is presented to the map before any adjustments. The neighborhood function used in the training was a gaussian; the lattice structure was hexagonal and the map shape was planar. Two-dimensional maps with different architectures (from 4  $\times$  4 to 10  $\times$  10 units) were tested, since the capacity of discrimination depends on the number of units selected to define the map. The structure that performed the best distribution and interpretation of the beer samples was then chosen.

## 3. Results and discussion

The HS–SPME–GC–FID chromatograms of some beer samples can be seen in Fig. 2. The most noticeable feature of these chromatograms is their complexity; although a simple visual examination of these plots reveals several peaks in common between samples, the range of their intensities is large. Also, several minor constituents are present in variable amounts. Therefore, it is clear that although these chromatograms certainly contain abundant information that can be associated to macroscopic properties of the samples (such as their quality or origin), it is necessary to use appropriate mathematical and statistical procedures to interpret this data in a practical and efficient way.

A total of 32 peaks, common to most samples, were selected as input variables for the generation of Kohonen maps. After data processing as described above, different neural network architectures were generated. The most suitable for interpretation and qualification of the samples was defined with 36 neurons, in a square arrangement of 6  $\times$  6. For this evaluation, the most important normalized peak areas that provided enough information for beer sample data interpretation were considered.

The distributions of samples in the generated network enabled inferring about the similarities among the canned Brazilian beers studied, based on the chromatographic profiles, are shown in Fig. 3. In this way, it is possible to perceive the formation of six sample sets, with three of these sets having just one sample.

To evaluate set formations, the individual variable map distributions (peaks, which reflect the retention times) were analyzed (Fig. 4), where the significant peaks utilized for data treatment are presented. According to these individual maps, it is possible to infer about the level of variable importance to the characterization of each different beer set.

The chromatographic profiles, specifically the chromatographic peak areas, reflect the extracted volatiles, in composition and quantity terms. These deductions were validated and complemented through the mass spectra of the SPME samples that allowed evaluation of the chemical composition of the commercial canned beers (Table 1).

Table 1 presents the peak identifications performed, where diverse kinds of compounds such as alcohols, esters, sulphide compound, organic acid, etc. were found. These compounds were responsible for the sets established in Fig. 3.

The upper left set verified in Fig. 3 (Set 1), constituted by samples B01, B02, B03, B08, B11, B13, B17 and B18, was grouped by the strong presence of the following compounds: octanoic acid (p28), ethyl decanoate (p40), ethyl (Z)-4-decenoate (p42), *p*-vinylguaiacol (p43),  $\gamma$ -nonalactone (p45), butylated hydroxytoluene (p48), nerolidol (p50), a long chain alcohol (p51, suggestion), an ester of phenylethyl alcohol with 6 carbons (p55, suggestion), and

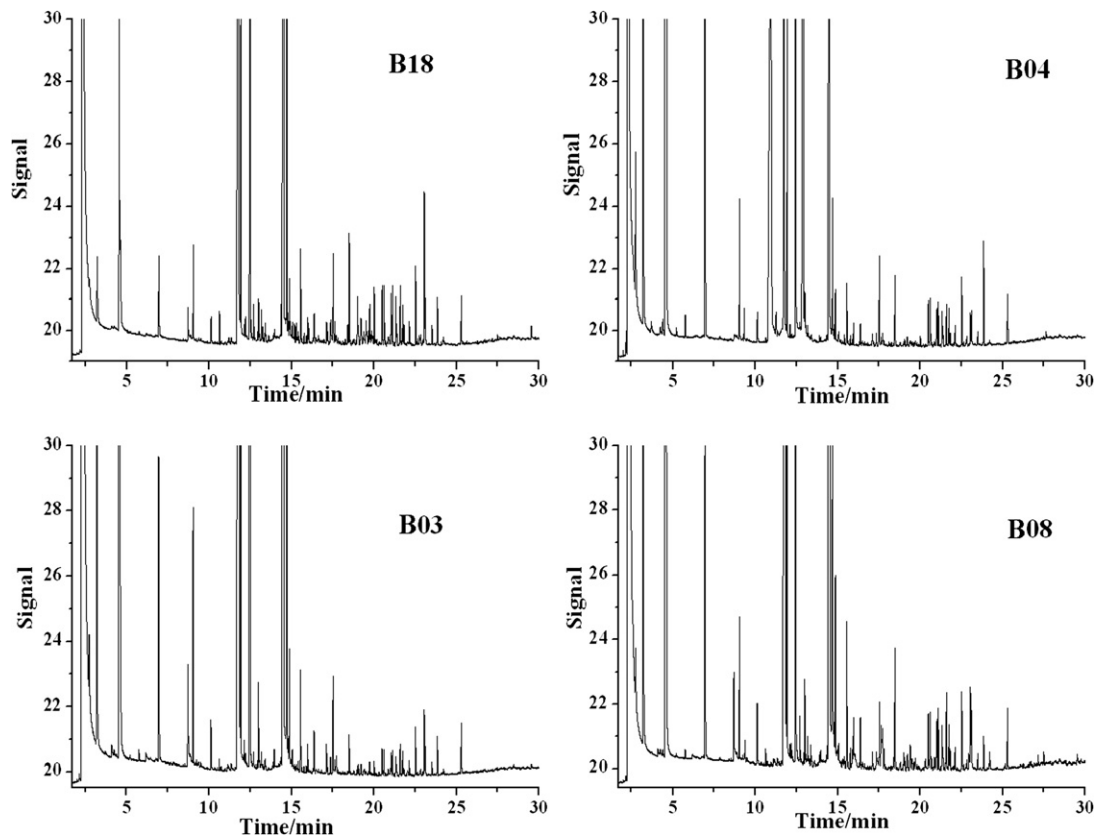


Fig. 2. Chromatograms obtained from four commercial canned Brazilian beers (B18, B04, B03, B08) through HS-SPME-GC-FID analysis.

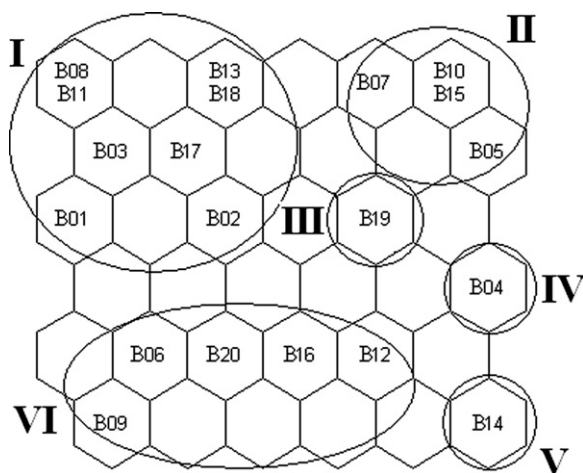


Fig. 3. Sample beer distributions after treatment by the Kohonen neural network.

isopropyl naphthalene, proposed to p56 and p57, and a non-identified compound at p39. The beer samples combined in this set can be characterized in terms of the extracted volatile compounds listed above.

The composition of Set I was possible to be deduced due to the variable map analysis in Fig. 4, according to the lateral intensity bars of each map. The white color in these bars indicates higher quantities of the compounds and the black one lower quantities. The gray scale shows intermediate quantity values. Thus, the compounds that are pronouncedly presented in a specific sample can be determined by the comparison of the position of this sample in the specific neuron in Fig. 3 and the variables located in this same neuron or in its neighborhood in Fig. 4.

Octanoic or caprylic acid is employed in food processing due to its antimicrobial activity; the toxic effects of octanoic acid on *Saccharomyces cerevisiae* (a kind of yeast) culture have been shown, inhibiting the fungal population growth, but contrarily, increasing the mean fermentation rate (Kasemets, Kahru, Laht, & Paalme, 2006). Volatile esters are only trace compounds in fermented beverages such as beer and wine, but ester compounds are pointed out as strong contributors to the aroma and flavour of beverages. Many studies have identified ethyl esters, in several beverages, mainly as the result of yeast metabolism during fermentation (Vallejo-Cordoba, Gonzalez-Cordova, & del Carmen Estrada-Montoya, 2004) (Alves, Nascimento, & Nogueira, 2005). *p*-Vinylguaicol is cited as a derivative of ferulic acid (hydroxycinnamic acid) during the brewing process, and it is frequently found in beer when wheat or wheat malt is used as a component of beer production (Coghe, Benoot, Delvaux, Vanderhaegen, & Delvaux, 2004). It can be an indication that beers presented in this upper left set were produced using wheat or malt wheat, in agreement with the Brazilian legislation which allows the addition of other kind of components in beer production such as sugar and other cereals like rice, corn, rye, sorghum, oat and wheat (Brasil, 1997).  $\gamma$ -Nonalactone is cited as a key compound whose concentration increases during ageing. It was also described that  $\gamma$ -nonalactone was not found in hop extracts, but was pronounced after hopping (Guyot-Declerck, Francois, Ritter, Govaerts, & Collin, 2005). Butylated hydroxytoluene (BHT) is a phenolic compound commonly used as a food additive, because of its antioxidant activity. Nerolidol is a sesquiterpene present in essential oils of several plants possessing antibacterial, antifungal, and antiparasitic properties (Cowan, 1999). The last compound belonged to Set I, related to p56 or p57 was isopropyl naphthalene. It is not a beer flavour constituent. In the literature a citation was found that diisopropyl naphthalenes are widely em-



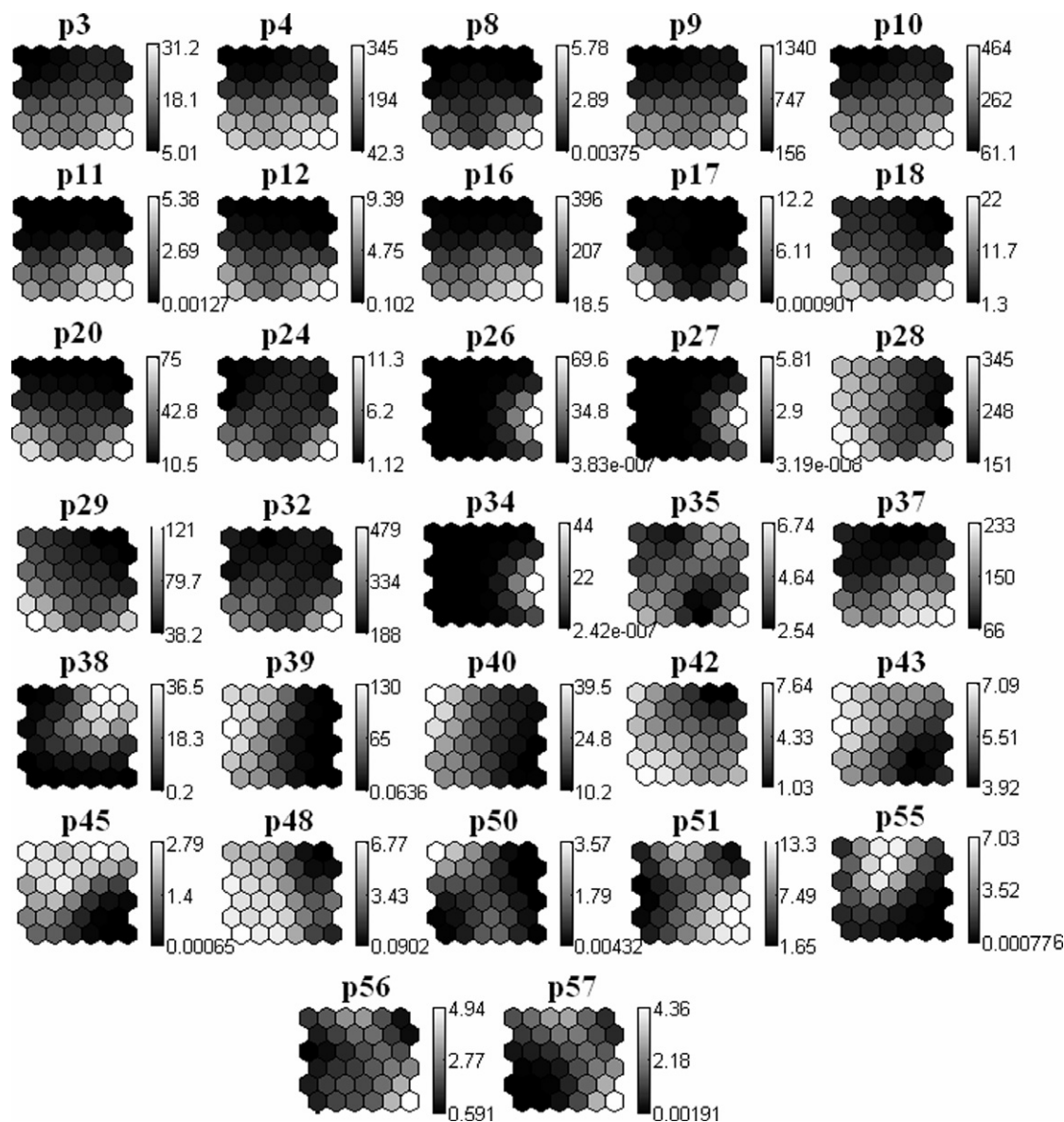


Fig. 4. Individual variable map distributions (chemical compounds) from the Kohonen neural network.

ployed as solvents in the paper industry and in the manufacture of carbonless copy paper and thermal paper. The presence of the naphthalenes in foodstuffs may possibly occur due to its migration from paperboard packaging (Bocacci, Chiaccherini, & Gesumundo, 1999). Although beer is not stored in paperboard containers, a reasonable justification is that some of its ingredients could be stored or purchased in paperboard packaging.

The upper right set in Fig. 3 (Set II) is formed by the samples B05, B07, B10 and B15. The peaks responsible for this configuration correspond to p35 (1-undecanol), p43 (*p*-vinylguaiacol), p45 ( $\gamma$ -nonalactone), p51 (possible long chain alcohol), p55 (probable ester of phenylethyl alcohol with 6 carbons) and also p38, non-identified (Fig. 4). If we compare these peaks with the ones verified in the previously described set (Set I), we can notice some common peaks that justify both arrangements. These are the cases of p43, p45, p51 and p55. This comes from the fact that some volatile compounds were responsible not only for the individual separations or within a same group, but also for separations in terms of upper and lower side or left and right side. This is the example of the peak p45 ( $\gamma$ -nonalactone) that separates the upper network side from the lower one

(Fig. 3), showing that this substance is quite important and is presented in all sets formed in the upper network region (Fig. 4).

In the samples of Set II the amount of a higher alcohol, 1-undecanol, was significant. The alcohols constitute an important part of the by-products formed during beer fermentation. Alcohols contribute to the strong and pungent smell and taste of beer, and their formation is linked to yeast-protein synthesis. They are important as precursors of flavor-active esters (Pinho et al., 2006). Undecanol compounds were also reported as constituents of essential oils of various plant species (Limberger et al., 2002).

The samples B19 (Set III), B04 (Set IV) and B14 (Set V) constitute individual sets (Fig. 3). The sample B19, located at the right central part of the Kohonen map (Fig. 3) is placed next to Set II due to the strong presence of the non-identified compound with the peak number p38. On the other hand, this sample was not joined to the Set II because of the higher quantity of a long chain alcohol (suggestion for p51), and also due to the near absence of the compound  $\gamma$ -nonalactone (p45).

The two commercial beer labels B04 and B14 were separated individually for presenting very peculiar peaks, not verified in the

**Table 1**

Compounds utilized to exploratory analysis of beers, tentatively identified by mass spectrometry

| Peak | FID $t_R^a$<br>(min) | MS $t_R^b$<br>(min) | Compound   | I    |
|------|----------------------|---------------------|--|------|
| p3   | 2.72                 | 1.80                | Dimethyl sulfide                                     | 701  |
| p4   | 3.19                 | 2.39                | Ethyl acetate  | 728  |
| p8   | 4.38                 | 3.48                | Ethyl propionate                                     | 795  |
| p9   | 4.55                 | 3.60                | 1-Pentanol   | 805  |
| p10  | 4.60                 | 3.66                | 2-Methyl 1-butanol                                   | 808  |
| p11  | 5.20                 | 4.27                | iso-Butyl acetate                                    | 842  |
| p12  | 5.75                 | 4.81                | Ethyl butyrate                                       | 873  |
| p16  | 6.95                 | 5.99                | Isoamyl acetate                                      | 942  |
| p17  | 6.99                 | – <sup>c</sup>      | –  | 944  |
| p18  | 8.76                 | 7.86                | 2-Pentyl furan                                       | 1045 |
| p20  | 9.03                 | 8.12                | Ethyl hexanoate                                      | 1060 |
| p24  | 10.11                | 9.21                | 1-Octanol  | 1122 |
| p26  | 10.63                | 9.74                | Sorbic acid  | 1151 |
| p27  | 11.01                | 10.14               | 2-Methyl-3-nonanone                                  | 1173 |
| p28  | 11.78                | 10.95               | Octanoic acid  | 1217 |
| p29  | 11.93                | –                   | Ethyl thiooctanoate                                  | 1225 |
| p32  | 12.46                | 11.58               | Phenylethyl alcohol                                  | 1255 |
| p34  | 12.90                | 12.05               | Ethyl benzoate                                       | 1280 |
| p35  | 13.00                | 12.15               | 1-Undecanol  | 1286 |
| p37  | 14.45                | 13.61               | 2-Phenylethyl acetate                                | 1369 |
| p38  | 14.49                | –                   | –  | 1371 |
| p39  | 14.52                | –                   | –  | 1373 |
| p40  | 14.69                | 13.89               | Ethyl decanoate                                      | 1382 |
| p42  | 14.87                | 14.02               | Ethyl (Z)-4-decenoate                                | 1393 |
| p43  | 15.55                | 14.70               | p-Vinylguaiacol                                      | 1431 |
| p45  | 16.36                | 15.55               | γ-Nonalactone  | 1477 |
| p48  | 17.52                | 16.72               | Butylated hydroxytoluene                             | 1543 |
| p50  | 17.72                | 16.88               | Sesquiterpenoid (?)                                  | 1555 |
| p51  | 18.48                | –                   | Long chain alcohol                                   | 1598 |
| p55  | 20.00                | –                   | Probably ester of phenylethyl alcohol with 6 carbons | 1685 |
| p56  | 20.49                | 19.71               | Isopropyl naphthalene?                               | 1713 |
| p57  | 20.61                | 19.83               | Isopropyl naphthalene?                               | 1719 |

<sup>a</sup> The term FID  $t_R$  corresponds to the retention time achieved with the flame ionization detection.

<sup>b</sup> The term MS  $t_R$  refers to the retention time obtained with mass spectrometry detection.

<sup>c</sup> Non-identified compounds.

other samples. The sample B04 was left apart from the others by presenting significant amounts of the following volatile components: sorbic acid (p26), 2-methyl-3-nonanone (p27), ethyl benzoate (p34), a probable long chain alcohol (p51) and isopropyl naphthalene (proposed for the p56 and p57 peaks) (Fig. 4). The peaks p26, p27, p34 are exclusive to this sample, being the motive to for its separation.

Sorbic acid is an antimicrobial food additive used to prevent the growth of yeasts, moulds and bacteria in food and beverages (Wang, Zhang, Wang, & Wang, 2006). Citation of nonanone carbonyl compounds can be found in the literature as one of the principal compounds constituting flavour components (Camara, Alves, & Marques, 2006). Ethyl benzoate is an ester formed by the condensation of benzoic acid and ethanol (Fan & Qian, 2005).

For beer sample B14 (Fig. 3), a variety of distinctive peaks were pointed out, many of them being almost exclusive to this beer, contributing to its individual sample position. The compounds were as follows: p3 (dimethyl sulphide), p4 (ethyl acetate), p8 (ethyl propanoate), p9 (1-pentanol), p10 (2-methyl-1-butanol), p11 (2-methyl propyl acetate), p12 (ethyl butanoate), p16 (3-methyl-1-butanol acetate), p18 (2-pentyl furan), p20 (ethyl hexanoate), p24 (1-octanol), p28 (octanoic acid), p29 (ethyl thiooctanoate), p32 (phenylethyl alcohol), p35 (1-undecanol), p37 (2-phenylethyl acetate), p42 (ethyl (Z)-4-decenoate), p51 (possible long chain alcohol), p56 and p57 (implied as possible peaks to isopropyl naphthalene) (Fig. 4).

Although sulphur compounds contribute in a positive way to the aroma and taste of many foodstuffs, due to their low sensory

thresholds and powerful, often unpleasant characteristics, they are frequently the cause of off-flavors and odors (Hill & Smith, 2000). At low levels, sulphur compounds contribute to palate fullness and overall beer aroma. A wide variety of sulphur compounds have been reported in beer, with dimethyl sulphide being one of the most abundant sulphur components. The ester compound, ethyl butanoate (ethyl butyrate), was identified in various works concerning beer, for example, in a Bavarian pilsner-type beer study, in which this odorant was suggested one of the key contributors to the overall aroma (Fritsch & Schieberle, 2005). The volatile ester 3-methyl-1-butanol acetate (isoamyl or isopentyl acetate) is considered one of most important flavor-active esters in beer (Verstrepen et al., 2003). Furan, also known as furane and furfuran, is a heterocyclic organic compound described as a constituent of the volatile fraction of beer, also in the 2-pentyl furan form. The concentration of furan compounds changes during beer ageing and they are sensitive indicators of heat induced flavor damage to beer (Pinho et al., 2006), which can suggest some problems in the brewing process of the B14 sample. Phenylethyl alcohol is a product of yeast metabolism and a marker for fermentation parameters (Wei, Mura, & Shibamoto, 2001). The aromatic ester 2-phenylethyl acetate was detected as one of the most active odorants in Croatian Rhine Riesling wine (Komes, Ulrich, & Lovric, 2006).

A great number of compounds were responsible by the formation of the last set (Set VI) located on the lower left side of the neural network map (Fig. 3), composed of the beer samples B06, B09, B12, B16 and B20. Actually, these compounds influenced the formation of the other sets previously described, as we can notice through the observation of Figs. 3 and 4. The most important variables to the composition of lower left set were the following: p3 (dimethyl sulphide), p4 (ethyl acetate), p8 (ethyl propanoate), p9 (1-pentanol), p10 (2-methyl-1-butanol), p11 (2-methylpropyl acetate), p12 (ethyl butanoate), p16 (3-methyl 1-butanol acetate), p18 (2-pentyl furan), p20 (ethyl hexanoate), p24 (1-octanol), p28 (octanoic acid), p29 (ethyl thiooctanoate), p32 (phenylethyl alcohol), p35 (1-undecanol), p37 (2-phenylethyl acetate), p40 (ethyl decanoate), p42 (ethyl (Z)-4-decenoate), p43 (p-vinylguaiacol), p45 (γ-nonalactone), p48 (butylated hydroxytoluene), p51 (possible long chain alcohol), as well as the peaks p17 and p39 that were not identified (Fig. 4). All the components responsible for this set formation have already been described above.

Thus, as cited for p45 (γ-nonalactone), it is still interesting to mention that the p28 (octanoic acid), p40 (ethyl decanoate) and p48 (butylated hydroxytoluene) variables were responsible for the separation of beer samples on the left and right sides of the Kohonen neural network map (Figs. 3 and 4) and the p3 (dimethyl sulphide), p4 (ethyl acetate), p9 (1-pentanol), p10 (2-methyl-1-butanol) peaks corresponding to the compounds that located the beer samples on the lower side of the network map (Figs. 3 and 4). The p42 (ethyl (Z)-4-decenoate) variable “isolated” the upper right set from the other samples that contained significant quantities of this compound (Figs. 3 and 4), and the p43 compound (p-vinylguaiacol) was responsible for the separation of the lower right set from the other beer samples that presented expressive quantities of this component (Figs. 3 and 4).

#### 4. Conclusions

Utilization of the Kohonen neural network was of great importance in this exploratory study of twenty Brazilian Pilsner beers because the evaluation of the similarities and differences between the studied samples became possible, in terms of the significant volatile compounds. It was possible to infer which samples presented analogous volatile profiles, even if they were produced by

different breweries, through the assessment of the six groups formed in the Kohonen map. Interesting information can be available, such as problems in beer production or the suggestion of the use of similar raw materials. The combination of HS–SPME–GC–FID and MS and the Kohonen network proved to be very efficient for the study of the volatile profile of complex matrices that, consequently, generates complex data practically impossible to be analyzed by traditional mathematical methods.

## Acknowledgment

The authors thank the Conselho Nacional de Desenvolvimento Científico e Tecnológico (CNPq) for financial support and for fellowships to G.A.S., F.A. and R.J.P.; and Prof. Carol Collins for language assistance.

## References

- Alves, R. F., Nascimento, A., & Nogueira, J. (2005). Characterization of the aroma profile of Madeira wine by sorptive extraction techniques. *Analytica Chimica Acta*, 546, 11–21.
- Barth-Haas Group. (2006). The Barth Report: Hops 2005/2006, Germain Hansmaennel, Strasbourg.
- Bicchi, C. P., Panero, O. M., Pellegrino, G. M., & Vanni, A. C. (1997). Characterization of roasted coffee and coffee beverages by solid phase microextraction – gas chromatography and principal component analysis. *Journal of Agricultural and Food Chemistry*, 45, 4680–4686.
- Boccacci, M. M., Chiaccherini, E., & Gesumundo, C. (1999). Potential migration of diisopropyl naphthalenes from recycled paperboard packaging into dry foods. *Food Additives and Contaminants*, 16, 207–213.
- BRASIL, Decreto no. 2.314 de 04 de setembro de 1997. Regulamenta a Lei no. 8.914 de 14 de julho que dispõe sobre a padronização, a classificação, o registro, a inspeção, a produção e a fiscalização de bebidas.
- Camara, J. S., Alves, M. A., & Marques, J. C. (2006). Multivariate analysis for the classification and differentiation of Madeira wines according to main grape varieties. *Talanta*, 68, 1512–1521.
- Coghe, S., Benoot, K., Delvaux, F., Vanderhaegen, B., & Delvaux, F. R. (2004). Ferulic acid release and 4-vinylguaiacol formation during brewing and fermentation: Indications for feruloyl esterase activity in *Saccharomyces cerevisiae*. *Journal of Agricultural and Food Chemistry*, 52, 602–608.
- Cowan, M. M. (1999). Plant products as antimicrobial agents. *Clinical Microbiology Reviews*, 12, 564–582.
- De Boishebert, V., Urruty, L., Giraudel, J. L., & Montury, M. (2004). Assessment of strawberry aroma through solid-phase microextraction-gas chromatography and artificial neuron network methods. Variety classification versus growing years. *Journal of Agricultural and Food Chemistry*, 52, 2472–2478.
- Fan, W., & Qian, M. C. (2005). Headspace solid phase microextraction and gas chromatography-olfactometry dilution analysis of young and aged Chinese “Yanghe Daqu” Liquors. *Journal of Agricultural and Food Chemistry*, 53, 7931–7938.
- Fritsch, H. T., & Schieberle, P. (2005). Identification based on quantitative measurements and aroma recombination of the character impact odorants in a Bavarian Pilsner-type beer. *Journal of Agricultural and Food Chemistry*, 53, 7544–7551.
- Guyot-Declerck, C., Francois, N., Ritter, C., Govaerts, B., & Collin, S. (2005). Influence of pH and ageing on beer organoleptic properties. A sensory analysis based on AEDA data. *Food Quality and Preference*, 16, 157–162.
- Hill, P. G., & Smith, R. M. (2000). Determination of sulphur compounds in beer using headspace solid-phase microextraction and gas chromatographic analysis with pulsed flame photometric detection. *Journal of Chromatography A*, 872, 203–213.
- Kasemets, K., Kahru, A., Laht, T., & Paalme, T. (2006). Study of the toxic effect of short- and medium-chain monocarboxylic acids on the growth of *Saccharomyces cerevisiae* using the CO<sub>2</sub>-auxo-accelerostat fermentation system. *International Journal of Food Microbiology*, 111, 206–215.
- Kohonen, T. (2001). *Self-Organizing Maps* (3rd ed.). Berlin: Springer.
- Komes, D., Ulrich, D., & Lovric, T. (2006). Characterization of odor-active compounds in Croatian Rhine Riesling wine, subregion Zagorje. *European Food Research and Technology*, 222, 1–7.
- Kowalski, C. H., da Silva, G. A., Poppi, R. J., Godoy, H. T., & Augusto, F. (2007). Neuro-genetic multi-optimization of the determination of polychlorinated biphenyl congeners in human milk by headspace solid phase microextraction coupled to gas chromatography with electron capture detection. *Analytica Chimica Acta*, 585, 66–75.
- Limberger, R. P., Simões-Pires, C. A., Sobral, M., Menu, C., Bessiere, J., & Henriques, A. T. (2002). Essential oils from some Myrceugenia species (Myrtaceae). *Flavour Fragrance Journal*, 17, 341–344.
- Oliveira, A. M., Pereira, N. R., Marsaioli, A., Jr., & Augusto, F. (2004). Studies on the aroma of cupuassu liquor by headspace solid-phase microextraction and gas chromatography. *Journal of Chromatography A*, 1025, 115–124.
- Otto, M. (1999). *Chemometrics – Statistics and Computer Application in Analytical Chemistry*. Weinheim: Wiley-VCH Verlag.
- Pinho, O., Ferreira, I., & Santos, L. (2006). Method optimization by solid-phase microextraction in combination with gas chromatography with mass spectrometry for analysis of beer volatile fraction. *Journal of Chromatography A*, 1121, 145–153.
- Vallejo-Cordoba, B., Gonzalez-Cordova, A. F., & del Carmen Estrada-Montoya, M. (2004). Tequila volatile characterization and ethyl ester determination by solid phase microextraction gas chromatography/mass spectrometry analysis. *Journal of Agricultural and Food Chemistry*, 52, 5567–5571.
- Verstrepen, K. J., Derdelinckx, G., Dufour, J. P., Winderickx, J., Thevelein, J. M., & Pretorius, I. S., et al. (2003). Flavor-active esters: Adding fruitiness to beer. *Journal of Bioscience and Bioengineering*, 96, 110–118.
- Vesanto, J., Himberg, J., Alhoniemi, E., & Parhankangas, J. (2000). SOM Toolbox for Matlab 5.
- Wampler, T. P., Washall, J. W., & Matheson, M. J. (1996). Applications of purge-and-trap to the analysis of beer. *American Laboratory*, 28, 18T–18V.
- Wang, L., Zhang, X., Wang, Y., & Wang, W. (2006). Simultaneous determination of preservatives in soft drinks, yogurts and sauces by a novel solid-phase extraction element and thermal desorption-gas chromatography. *Analytica Chimica Acta*, 577, 62–67.
- Wei, A., Mura, K., & Shibamoto, T. (2001). Antioxidative activity of volatile chemicals extracted from beer. *Journal of Agricultural and Food Chemistry*, 49, 4097–4101.